



SIX SIGMA RANCH®

HIKING & BIKING AT SIX SIGMA RANCH

TOUR #2

ASBILL CREEK TRAIL ("New" Mountain Bike Trail, South Leg) Along Asbill Creek from Rustici Drive/ Oak Street to the Rock Wall on Rustici Drive

Did you know?

- Asbill Creek was named after the Asbill family who settled along the creek in the 1860s.
- The Creek Trail was built in 2019 by the local Mountain Bike teams and their coaches and friends.
- The trail is fairly level, with just a couple of small dips.
- The trail is about 1.0 mile long.
- A new half-mile loop into the hills south of the creek is under construction

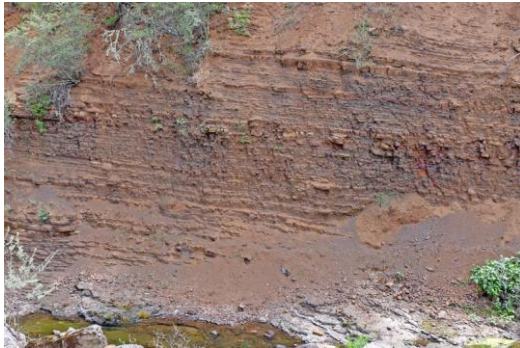
Long pants and boots or closed-toe shoes are highly recommended.



1. Start by the cattle guard where Rustici Drive meets the private Oak Street. Follow the south trail across the field.



2. The trail curves slightly to the left and continues downhill to Asbill Creek. It offers some interesting looks at the landscape such as...



3. ... almost vertical walls of layered rock



4. ... all-year waterholes



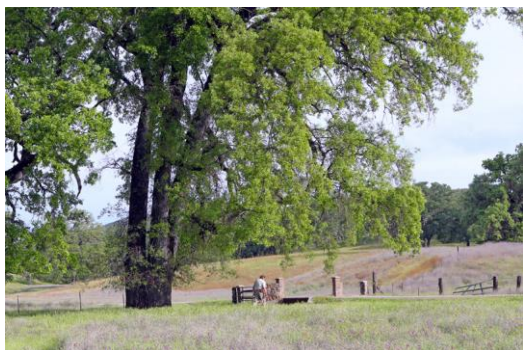
5. ... rocky creek beds that dry out and sport various grasses when there's a break in the rain



6. ... a behind-the-scenes look at drainage ditches that were constructed in the 1950s to lead rainwater to the creek from the hills on the north side of Asbill Valley.



7. A couple of times the trail intersects with cow trails that lead away from the creek. Stay on the trail closest to the creek for the best hiking experience.



9. The trail ends by the rock wall on Rustici Drive.



8. Close to the end of the trail you'll see several weathered tree trunks at the other side of the creek. These trees were cut down in the 1950s when the owner, Norval Brookins, had a canal dug to relocate the part of the creek that was sprawling all over the valley.



SIX SIGMA RANCH®

707.994.4068
13372 SPRUCE GROVE ROAD
LOWER LAKE, CA 95457

SIXSIGMARANCH.COM