



SIX SIGMA RANCH®

---

---

## HIKING & BIKING AT SIX SIGMA RANCH

### TOUR # 5

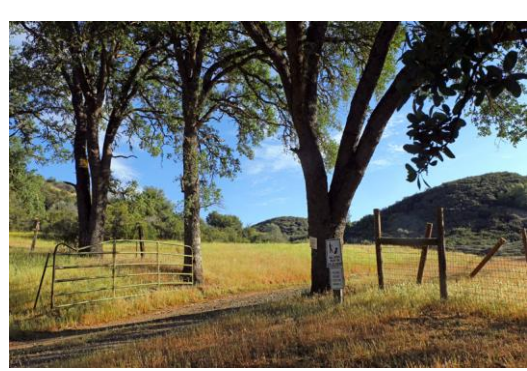
#### **EAGLE ROCK ROAD**

**From Tasting Room going “out back”**

Did you know?

- Eagle Rock Road was named after a free-standing rock formation that looks like the head of an eagle. The rock is a little further out than the part of the trail that is open to the public.
- At some point the road was part of a stagecoach route going out to the mines in Knoxville.
- The road is fairly level, but has some dips by the creeks. The two low crossings usually dry out in late spring.
- The trail is about 0.9 mile long.

Long pants and boots or closed-toe shoes are recommended. (Rain boots are a good idea if you plan to cross the creek while it is still has water in it).



1. Start by the gate just east of the Tasting Room. If on a rare occasion this gate is closed, the road is temporarily closed to the public.



2. The barn was built by Norval Brookins who assembled almost the entire ranch between 1926 and 1963.



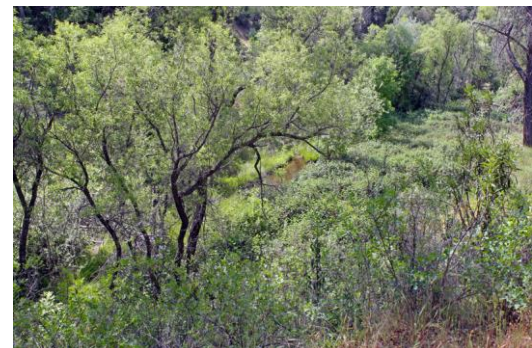
3. Maybe you can spot this big English walnut tree off the right side of the road after the barn. Here was the homestead of Thomas Henry Smith, one of the original settlers at the ranch. Even if the family moved to town more than 100 years ago, the old Iris patch under the trees still blooms every spring.



4. The landscape on the left side of this part of the road is chaparral...

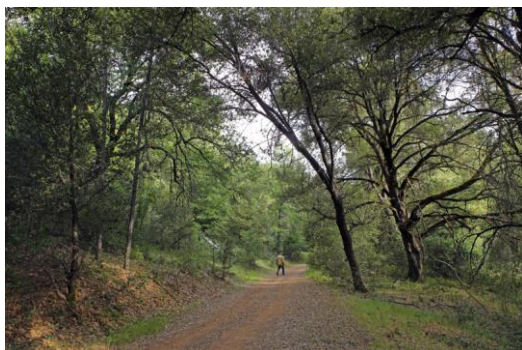


5. ... While big valley oaks reach out towards the creek on the other side of the road.



6. On this day in mid-May 2020, the creek was still running with plenty of water





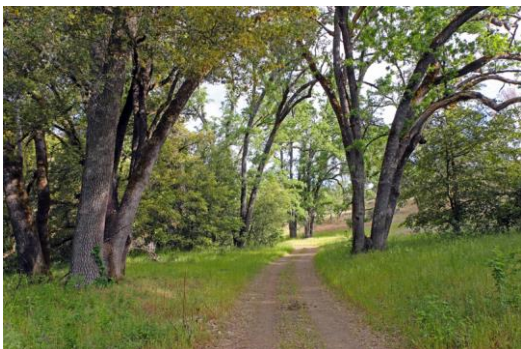
7. As you approach the first creek crossing, you'll see giant oak trees on both sides of the road. Black oaks thrive on the left, and canyon live oaks and interior live oaks on the other side.



8. The creek was still gurgling by the first crossing in mid-May, but this spot will soon dry out completely.



9. On the other side of the crossing, the steep hillsides on the left side of the creek are covered with mixed oak forest...



10. ... while big valley oaks thrive on both sides of the road.



11. The creek crosses the road for the second time, flanked by big rocks.



12. The end of the public part of this road is marked by a green cattle gate. Like the first gate, it is surrounded by blue oaks.



SIX SIGMA RANCH®

---

707.994.4068  
13372 SPRUCE GROVE ROAD  
LOWER LAKE, CA 95457

[SIXSIGMARANCH.COM](http://SIXSIGMARANCH.COM)