



SIX SIGMA RANCH®

---

## HIKING & BIKING AT SIX SIGMA RANCH

Both Sorensen Avenue and Eagle Rock Road were carved out of a mountain side, with a drop down of more than 50 feet in many places. *For safety, please stay close to the mountain side, far away from the outer edge of the road.*

Long pants and boots or closed-toe shoes are recommended.

### TOUR # 1

#### SORENSEN AVENUE

##### From Tasting Room to Diamond Mine Vineyard

- Sorensen Avenue was named after our friend David Sorensen who did the construction in the year 2000, using our 1957 D-6 Bulldozer.
- The road is 1.6 miles long and goes from the bridge by the tasting room to the gate of Christian's Block in the Diamond Mine Vineyard.
- The altitude increase is about 250 ft from the bridge to the vineyard gate.
- The road goes through different landscape types, mainly: Oak woodland (valley oak, blue oak, live oak) / Chaparral / Chaparral mixed with oak (blue oak, live oak) / Oak woodland (mainly black oak) / Open land with occasional trees.

### TOUR # 5

#### EAGLE ROCK ROAD

##### From Tasting Room going "out back" (dry season)

- Eagle Rock Road runs along Asbill Creek.
- It was named after a free-standing rock formation that looks like the head of an eagle. The rock is a little further out than the part of the trail that is open to the public.
- At some point the road was part of a stagecoach route going out to the mines in Knoxville.
- The road is fairly level, but has some dips by the creeks. The two low crossings usually dry out in the summer.
- The trail is about 0.9 mile long.

## HIKE AND BIKE WITH COMMON SENSE

By God's grace, our family became stewards of Six Sigma Ranch twenty years ago. It's a pleasure for us to share this incredible piece of nature, and we hope you'll enjoy your tours here. (Learn more about the place in our books *Folks Who Walked the Land of Six Sigma Ranch* and *Oaks of Six Sigma Ranch*.)

Although we can't guarantee a 100% trouble-free experience, we'd like to share some common-sense advice for your comfort and safety.

- Choose a trail that works well with your fitness level, and dress according to the weather.
- Bring plenty of water to drink.
- Stay on the trail and keep dogs on leash.
- Keep an eye out for poison oak – leaves-of-three, let them be!
- Protect against ticks and insects – wear long pants and boots or closed-toe shoes. Check your skin and clothing after the tour.
- Snakes will usually slither away before you notice them. If you should see one, leave it plenty of space. Do not climb rocks, and don't put your hands and feet where you can't see them.
- Bears will usually walk away before you spot them. If you should ever be faced with one, lift your arms and make yourself look as big as you can. Back off slowly, don't run.
- What about mountain lions, you may wonder? We have spotted mountain lions on our trail cameras, so we knew they were here, but it would take 20 years before we personally got a glimpse of one. Again, use common sense – hike and bike in broad daylight, stay with the group, and keep children close.

*Kaj & Else*

## *#1 Sorensen Avenue*



1. Start by the bridge by the Tasting Room.



2. The road leads through oak woodland.



3. After the first curve in the road, the vegetation changes to chaparral.



4. Turn around to get a view of Asbill Valley with Mt. Konocti in the distant background.



5. Chaparral landscape.



6.. If the gate is closed but not locked, leave it closed and secured behind you. If it is open, leave it open.

If you find the gate locked, please don't continue.





7. About  $\frac{3}{4}$  mile from the bridge, oak trees appear again.



8. Further up the road you get a view of Jim Dollar Mountain. The hillside below the road is clad in blue oak.



9. Giant moss-covered black oaks grow in this area.



10. The road opens up to a flat area, originally named Schweirs' Flat after two brothers who settled the land in the 1880s. Our name for the area is the Diamond Mine.



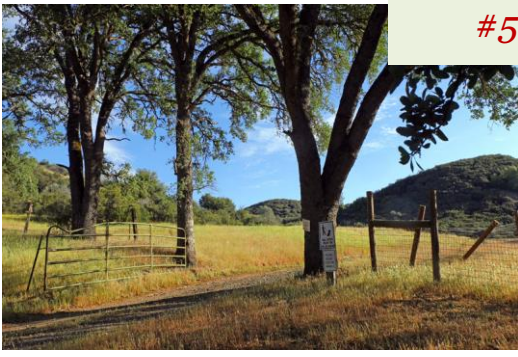
11. The road curves to the right and ends by Christian's Vineyard. (There is also a road going left, but that part is not open to the public.)



12. If you continue straight instead of making the turn, you'll get to Marianne & Annette's Vineyard.



## #5 Eagle Rock Road



1. Start by the gate just east of the Tasting Room. If on a rare occasion this gate is closed, the road is temporarily closed to the public.



2. The barn was built by Norval Brookins who assembled almost the entire ranch between 1926 and 1963.



3. Maybe you can spot this big English walnut tree off the right side of the road after the barn. Here was the homestead of Thomas Henry Smith, one of the original settlers at the ranch. Even if the family moved to town more than 100 years ago, the old Iris patch under the trees still blooms every spring.



4. The landscape on the left side of this part of the road is chaparral...

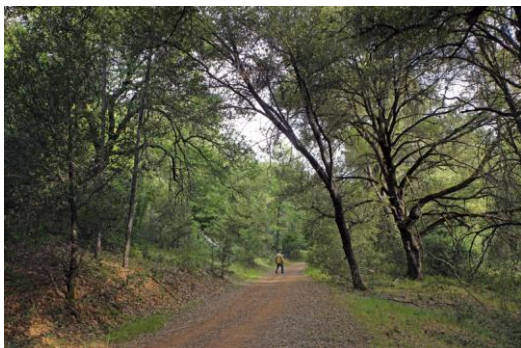


5. ... While big valley oaks reach out towards the creek on the other side of the road.



6. On this day in mid-May 2020, the creek was still running with plenty of water





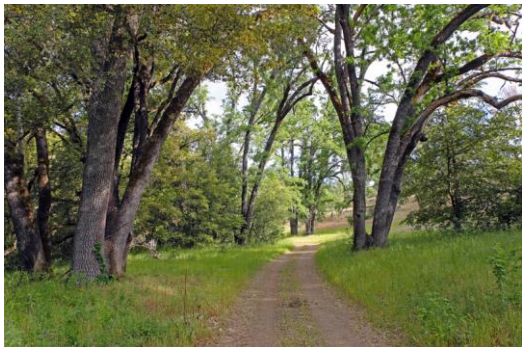
7. As you approach the first creek crossing, you'll see giant oak trees on both sides of the road. Black oaks thrive on the left, and canyon live oaks and interior live oaks on the other side.



8. The first creek crossing dried out completely by the end of June.



9. On the other side of the crossing, the steep hillsides on the left side of the creek are covered with mixed oak forest...



10. ... while big valley oaks thrive on both sides of the road.

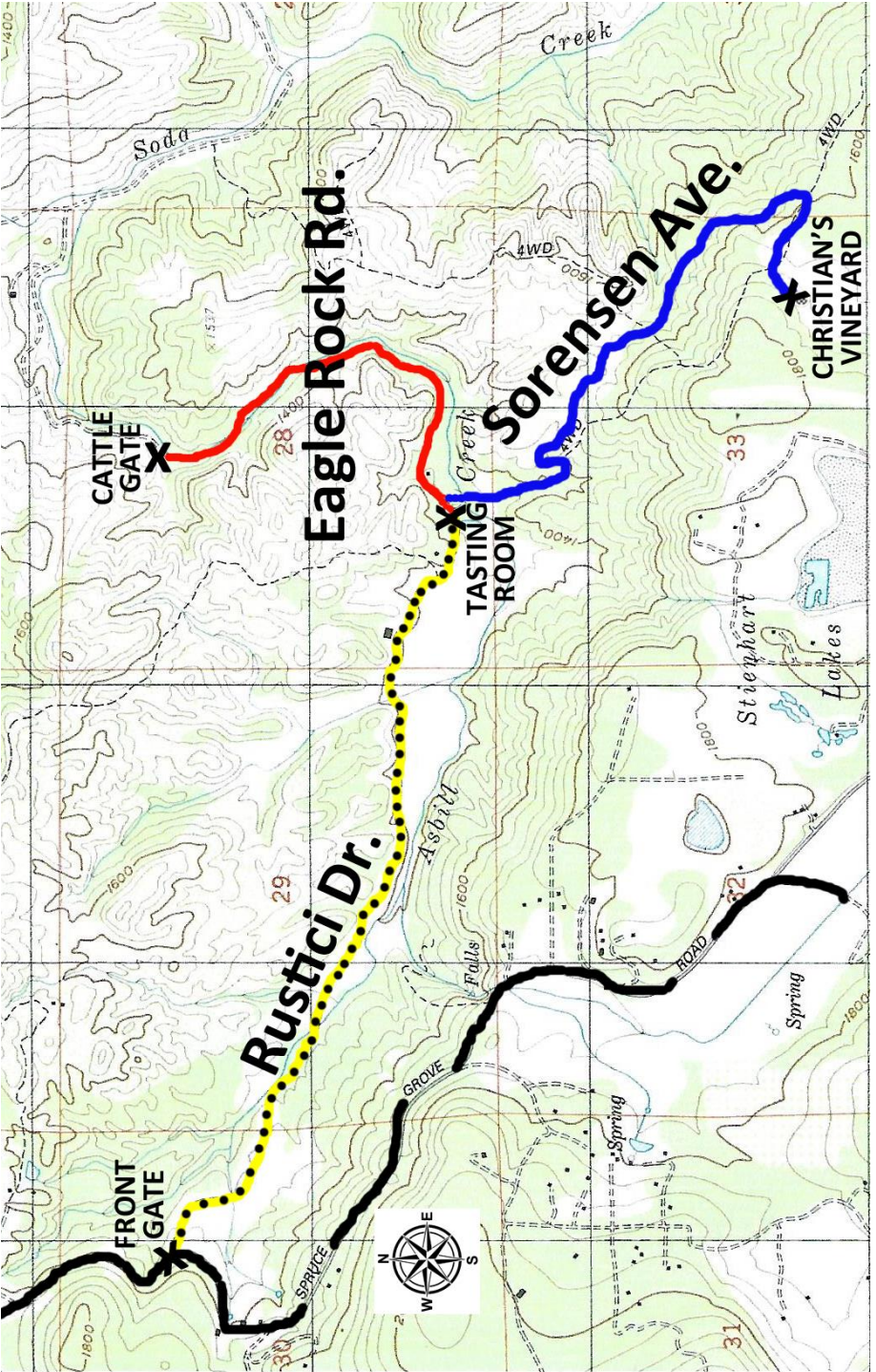



11. The creek crosses the road for the second time, flanked by big rocks. This crossing is also completely dry in summer.



12. The end of the public part of this road is marked by a green cattle gate. Like the first gate, it is surrounded by blue oaks.





HIKING & BIKING "MENU"					
Please sign in and park by the Tasting Room. Note, there are no signage on the trails yet.					
	Route	Difficulty	Distance	Terrain	Notes
# 0	Rustici Drive	easy	2 miles gravel road	slight incline, mainly at the last half	Driveway from Tasting Room to Front Gate. Return route for #2, #3, #4a,b
# 1	Sorensen Avenue	medium	1.6 miles gravel road	altitude increase about 250 ft.	Separate road from Tasting Room to Diamond mine VY
# 2	Asbill Creek Trail	easy/ medium	1.0 miles trail	fairly level, with a few "dips"	Connects with # 0
# 3	Winery Trail	hard	2.8 miles trail	moderate hills	Connects with # 0
# 4a	Happy Camper Trail North	very hard	3.1 miles trail	steep hills	Extension of # 3 Connects with # 0
# 4b	Happy Camper Trail South	very hard	1.6 miles trail	steep hills	Extension of # 4a Connects with # 0
# 5	Eagle Rock Road	medium	0.9 miles narrow gravel road	a few "dips" and two creek crossings	Separate road from Tasting Room going "out back"
Picture-guides are available for these self-guided tours. Also available at <a href="https://SixSigmaRanch.com/visit">SixSigmaRanch.com/visit</a> . Flower guide available too.					