



SIX SIGMA RANCH®

---

## HIKING & BIKING AT SIX SIGMA RANCH

### TOUR # 4A & 4B

### **HAPPY CAMPER TRAIL NORTH & SOUTH** **("Old" Mountain Bike Trail, North & South Leg)**

**The trails are a continuation of the Winery Trail, Tour #3**

Did you know?

- The Happy Camper Trails were hand-built in 2017 by the local high school Mountain Bike teams and their coaches and friends.
- The north leg is about 3.1 miles long and the south leg is about 1.6 miles long, both in a very hilly terrain.
- The trails go through different landscape types, mainly:
  1. Oak woodland (valley oak, blue oak, live oak, with an occasional black oak on the south leg)
  2. Chaparral
  3. Open land with occasional trees

Long pants and boots or closed-toe shoes are highly recommended.

707.994.4068  
13372 SPRUCE GROVE ROAD, LOWER LAKE, CA 95457  
SIXSIGMARANCH.COM

## HIKE AND BIKE WITH COMMON SENSE

By God's grace, our family became stewards of Six Sigma Ranch twenty years ago. It's a pleasure for us to share this incredible piece of nature, and we hope you'll enjoy your tours here. (Learn more about the place in our books *Folks Who Walked the Land of Six Sigma Ranch* and *Oaks of Six Sigma Ranch*.)

Although we can't guarantee a 100% trouble-free experience, we'd like to share some common-sense advice for your comfort and safety.

- Choose a trail that works well with your fitness level, and dress according to the weather.
- Bring plenty of water to drink.
- Stay on the trail and keep dogs on leash.
- Keep an eye out for poison oak – leaves-of-three, let them be!
- Protect against ticks and insects – wear long pants and boots or closed-toe shoes. Check your skin and clothing after the tour.
- Snakes will usually slither away before you notice them. If you should see one, leave it plenty of space. Do not climb rocks, and don't put your hands and feet where you can't see them.
- Bears will usually walk away before you spot them. If you should ever be faced with one, lift your arms and make yourself look as big as you can. Back off slowly, don't run.
- What about mountain lions, you may wonder? We have spotted mountain lions on our trail cameras, so we knew they were here, but it would take 20 years before we personally got a glimpse of one. Again, use common sense – hike and bike in broad daylight, stay with the group, and keep children close.

*Kaj & Else*

## #4a Happy Camper Trail North



1. As you approach the end of the Winery Trail (Tour #3), continue straight in the "Y".



2. Chaparral on the north side of the trail, blue oaks on the south side.



3. The trail features roller-coast-like ups and downs...



4. ...and ancient blue oaks...



5. ...some of which have given in to old age.



6. You get a few views of Michael's Vineyard to the south.





7. The trail goes in between two rows of rocks that look like it could be an old foundation.



8. Meandering on the north side of the driveway (Rustici Drive), the trail gets close to Asbill Creek at one point. In the dry season, you can cross the creek here and exit to Rustici Drive.



9. The last part of the trail is twisting and turning across grassland...



10. ... around blue oak trees...



11. ... and along streams and canyons...



12. ... until it runs along the fence of Michael's Vineyard and ends on Rustici Drive. You can return via Rustici Drive, or continue on Happy Camper Trail South on the other side of the drive.



## #4b Happy Camper Trail South



1. To continue on the south leg of the trail, follow the fence on the south side of Rustici Drive.



2. This part of the trail also has some serious turns and twists.



3. The hand-dug trail has some narrow spots where manzanitas and oak trees grow close to each other.



4. A black oak thrives on a north hillside here.



5. Michael's Vineyard peeks out behind an old manzanita.



6. The trail winds back and forth in hairpin turns on a big piece of sloping grassland





7. Rustici Drive comes into view from a hillside...



8. ... before the trail winds back along yet another seasonal stream.



9. With a diameter of more than 3 feet, this dead oak tree must have been one of the biggest blue oaks on the ranch. (We have valley oaks up to more than 5 feet in diameter.)



10. The trail reveals Rustici Drive one more time ...

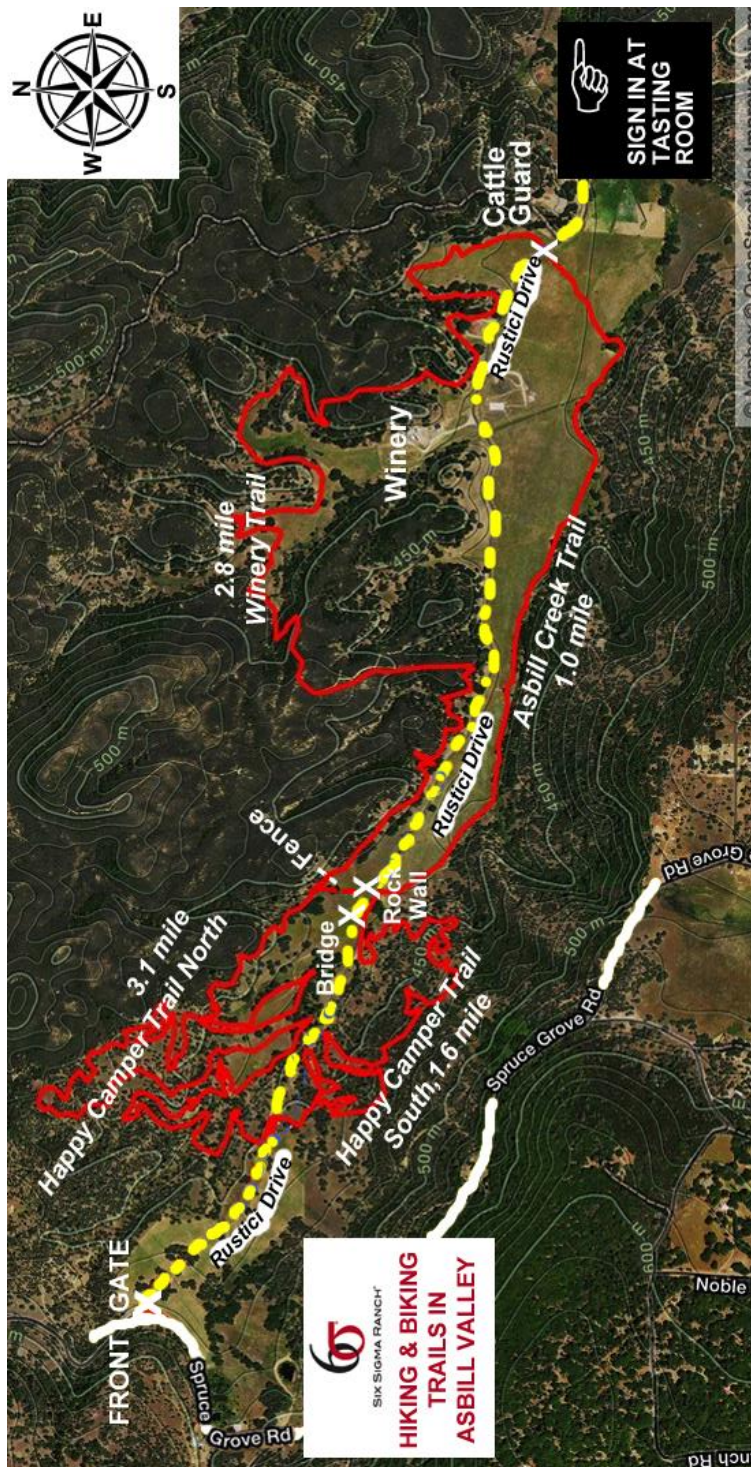



11. ... before it takes a run along the last stream...



12. ... and leads back to Rustici Drive. The sign marks the starting point for our very first NorCal bike race in 2017.





HIKING & BIKING "MENU"					 SIX SIGMA RANCH
Please sign in and park by the Tasting Room. Note, there are no signage on the trails yet.					
	Route	Difficulty	Distance	Terrain	Notes
# 0	Rustici Drive	easy	2 miles gravel road	slight incline, mainly at the last half	Driveway from Tasting Room to Front Gate. Return route for #2, #3, #4a,b
# 1	Sorensen Avenue	medium	1.6 miles gravel road	altitude increase about 250 ft.	Separate road from Tasting Room to Diamond mine VY
# 2	Asbill Creek Trail	easy/ medium	1.0 miles trail	fairly level, with a few "dips"	Connects with # 0
# 3	Winery Trail	hard	2.8 miles trail	moderate hills	Connects with # 0
# 4a	Happy Camper Trail North	very hard	3.1 miles trail	steep hills	Extension of # 3 Connects with # 0
# 4b	Happy Camper Trail South	very hard	1.6 miles trail	steep hills	Extension of # 4a Connects with # 0
# 5	Eagle Rock Road	medium	0.9 miles narrow gravel road	a few "dips" and two creek crossings	Separate road from Tasting Room going "out back"
Picture-guides are available for these self-guided tours. Also available at <a href="https://SixSigmaRanch.com/visit">SixSigmaRanch.com/visit</a> . Flower guide available too.					